



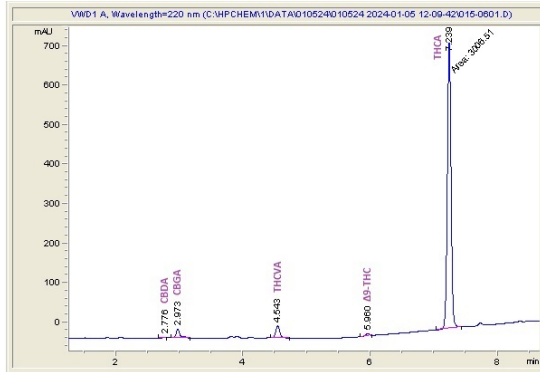
Sample 642-010524-007

Gelato 33

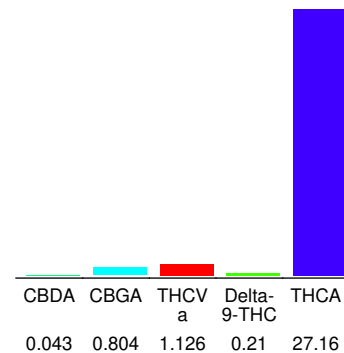
Sample Submitted: 01-05-2024; Report Date: 01-11-2024

## Gelato 33

### Chromatogram



### Cannabinoid Profile



### Cannabinoid Profile by HPLC

**0.21%**  
Delta-9-THC

**0.00%**  
CBD

**29.34%**  
Total Cannabinoids

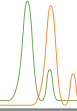
Cannabinoid	% wt	mg/g
CBDA	0.043	0.43
CBGA	0.804	8.04
THCVa	1.126	11.26
Delta-9-THC	0.21	2.1
THCA	27.16	271.6
<b>Total Cannabinoids</b>	<b>29.34</b>	<b>293.4</b>
<b>Calculated Total THC</b>	<b>24.03</b>	<b>240.29</b>
<b>Calculated CBD Yield</b>	<b>0.04</b>	<b>0.38</b>

Calculated Total THC = Delta-9-THC + 0.877 \* THCA  
Calculated Maximum CBD Yield = CBD + 0.877 \* CBDA

**Marin Analytics, LLC**  
250 Bel Marin Keys Blvd, Suite D4  
Novato, CA 94949  
833-321-TEST / info@marinanalytics.com

**Mike Clemmons**  
Lab Manager

This sample has been tested by Marin Analytics, LLC using valid testing methodologies and a quality system. Values reported relate only to the sample tested. Marin Analytics, LLC makes no claims as to the efficacy, safety, or other risks associated with any detected or non-detected levels of any compounds reported herein. This Certificate shall not be reproduced except in full without the written approval of Marin Analytics, LLC. Copyright 2023 Marin Analytics, LLC All Rights Reserved.



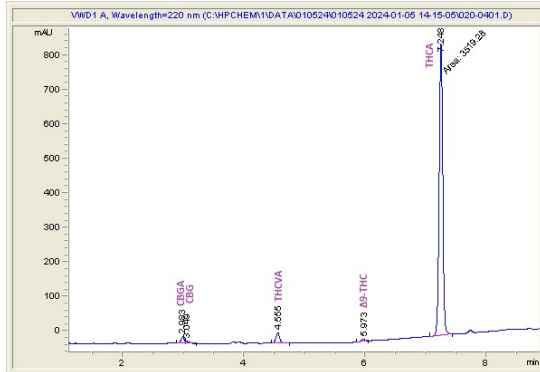
Sample 642-010524-012

Grand Guava

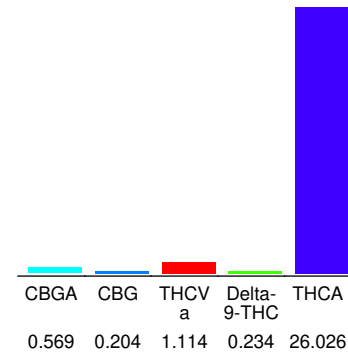
Sample Submitted: 01-05-2024; Report Date: 01-11-2024

## Grand Guava

### Chromatogram



### Cannabinoid Profile



### Cannabinoid Profile by HPLC

**0.23%**

Delta-9-THC

**0.00%**

CBD

**28.15%**

Total Cannabinoids

Cannabinoid	% wt	mg/g
CBGA	0.569	5.69
CBG	0.204	2.04
THCVa	1.114	11.14
Delta-9-THC	0.234	2.34
THCA	26.03	260.26
<b>Total Cannabinoids</b>	<b>28.15</b>	<b>281.5</b>
<b>Calculated Total THC</b>	<b>23.06</b>	<b>230.59</b>
<b>Calculated CBD Yield</b>	<b>0.00</b>	<b>0.00</b>

Calculated Total THC = Delta-9-THC + 0.877 \* THCA  
Calculated Maximum CBD Yield = CBD + 0.877 \* CBDA

**Marin Analytics, LLC**

250 Bel Marin Keys Blvd, Suite D4  
Novato, CA 94949

833-321-TEST / info@marinanalytics.com

**Mike Clemmons**  
Lab Manager